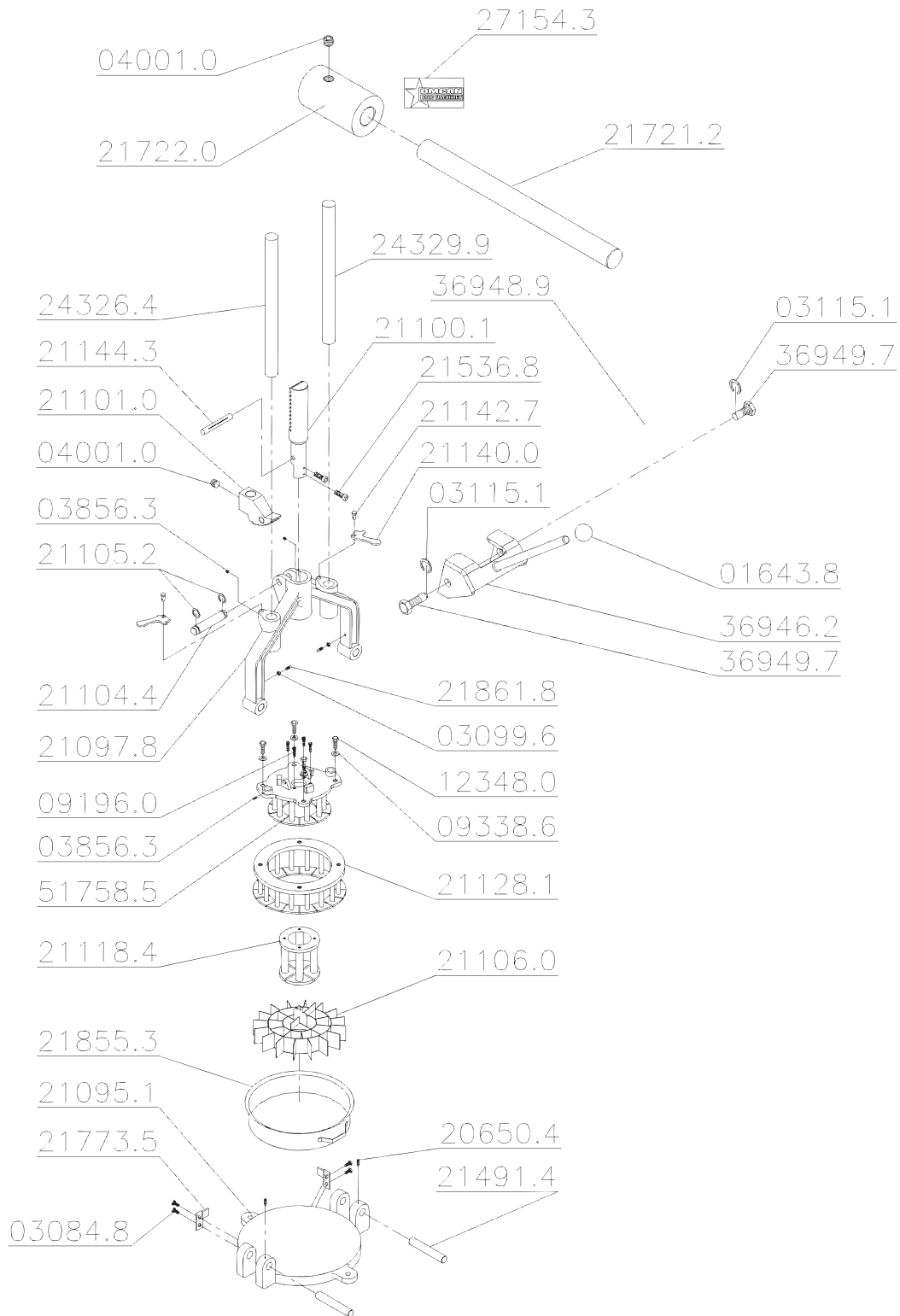


Parts Breakdown

Item 10839



Parts Breakdown

Item 10839

Item No.	Description	Position	Item No.	Description	Position	Item No.	Description	Position
38353	Sphere with Thread 3/8" for 10839	01643.8	62780	Eixo Principal for 10839	21100.1	62796	CS Alavanca Grande (Branco) for 10839	21721.2
30281	Screw M6x12 DIN 933 ZB for 10839	03084.8	62781	Gear Dp88 M4 (White) for 10839	21101.0	62797	Contra Peso (Branco) for 10839	21722.0
38180	Screw Nut M6 DIN 934 ZB for 10839	03099.6	62782	Pino da Engrenagem for 10839	21104.4	62798	Encosto for 10839	21773.5
27694	Ring 10x1 DIN 471 for 10839	03115.1	62783	Anel Elastico 15 DIN 6799 for 10839	21105.2	60334	Round Shaper for 10839	21855.3
78587	PFS M6x16 DIN 916 FOSF. for 10839	03856.3	62784	CS Chapa Divisora for 10839	21106.0	62800	Pino da Forma for 10839	21861.8
38561	Screw M8x20 for 10839	04001.0	62785	Divisor 4 (Branco) for 10839	21118.4	62802	Eixo Secundario Esquerdo for 10839	24326.4
38188	Screw M6x20 DIN for 10839	09196.0	62786	Divisor 16 (Branco) for 10839	21128.1	62803	Eixo Secundario Direito for 10839	24329.9
38296	Washer L A10.5 ZB for 10839	09338.6	62791	Chapa Trava (Branco) for 10839	21140.0	27720	Omcan Logo (Machines) for 10839	27154.3
62776	PFS M10x25 DIN 933 ZB for 10839	12348.0	62792	Pino da Chapa Trava for 10839	21142.7	62804	Support Sheet Set for 10839	36946.2
62777	PFS M5x8 DIN 916 FOSF. for 10839	20650.4	62793	Pino Elast.14x55 Din EN 28752 for 10839	21144.3	62805	Mola da Chapa de Escora for 10839	36948.9
62778	Base (Branco) for 10839	21095.1	62794	Pino da Base for 10839	21491.4	62806	Pino de Articulacao for 10839	36949.7
62779	Cabecote Guia for 10839	21097.8	62795	PFS M8x20 DIN 912 FOSF. for 10839	21536.8	62807	Divisor 10 (Branco) for 10839	51758.5